

MIGREC

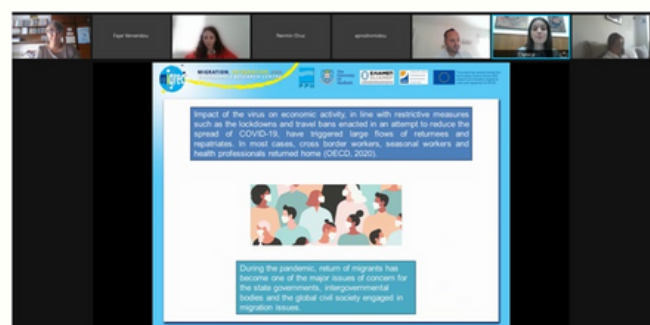
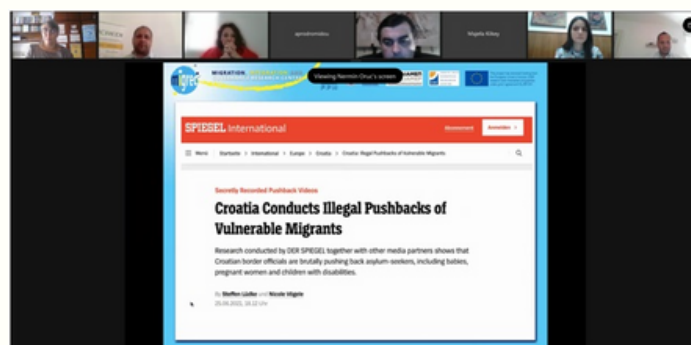
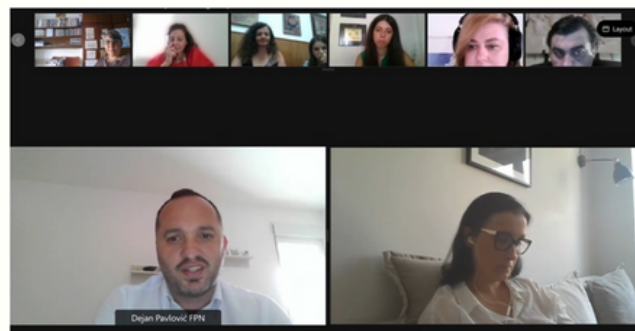
Migration, Integration and Governance Research Centre



MIGREC Team members organized a stand-alone panel at 18th IMISCOE Annual Conference

held from July 7 to 9, 2021

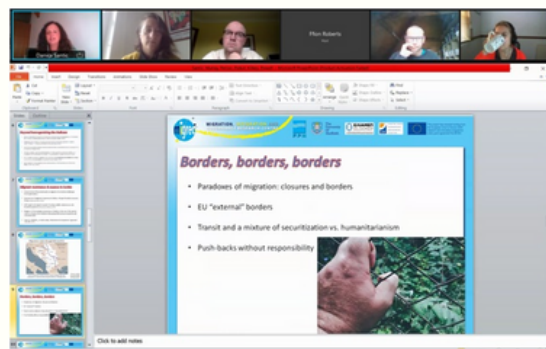
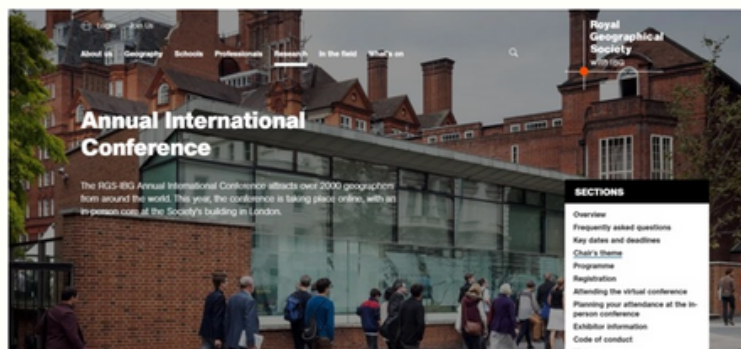
MIGREC Team participated with its stand-alone panel under the title “Migration governance in the time of Covid-19: case studies of ‘crisis’ management in South-East Europe”. The panel comprehensively examined the “crisis” management through policy, media and behavioural lenses, and as related to different groups of migrants (irregular, regular and returnees). By interrogating intersections between migration, health, security and economic development, the panellists considered the impact of Covid-19 on different aspects of migration governance, such as border control, domestic sociopolitical parameters that have been steering decision making toward securitization of migration policies toward further “campization” of migrants as well as the patterns of interpretation of migration issues found in the media. Beside the governmental, media and NGO role, the panel provided insight into the intentions of Covid-19 triggered returnees in regard to permanently settling in their home country and potential solutions to mitigate emigration flows from the region.



Read more at: www.migrec.fpn.bg.ac.rs

MIGREC Team members presented at Royal Geographical Society Annual International Conference 2021

“Migrants, borders and competing narratives in the Western Balkans: A Serbian Perspective” was presented by **Danica Šantić**, on behalf of the MIGREC team which included also **Natalija Perišić**, **Rebecca Murray**, **Aneta Piekut**, **Ryan Powell** and **Majella Kilkey**. MIGREC’s presentation was a part of the panel “Exchange and twinning in an age of borders: (inter)nationalism, mobility, encounter, and participation”.



MIGREC Team members presented at the conference “National minorities, migration and security”

held from September 6 to 8, 2021, Brijuni, Croatia

Nataša Milošević, **Milica Glišić** and **Ena Todorović** analyzed the topic of emigration of highly skilled population from Serbia and pointed to systemic obstacles to prevent brain drain.

Dejan Pavlović, **Danica Šantić** and **Natalija Perišić** researched potential consequences of the New EU Pact on Asylum and Migration on migration trends and migration policies in Serbia.

Nermin Oruč, **Danica Šantić** and **Marija Antić**, presented the topic of migration management on the Western Balkans during the COVID-19 pandemic.

Danijela Pavlović, **Violeta Marković** and **Sanja Polić Penavić** focused on challenges for the cooperation between the civil and public sectors in the protection of migrants and asylum seekers during the COVID-19 pandemic.



Follow us



<http://migrec.fpn.bg.ac.rs/>